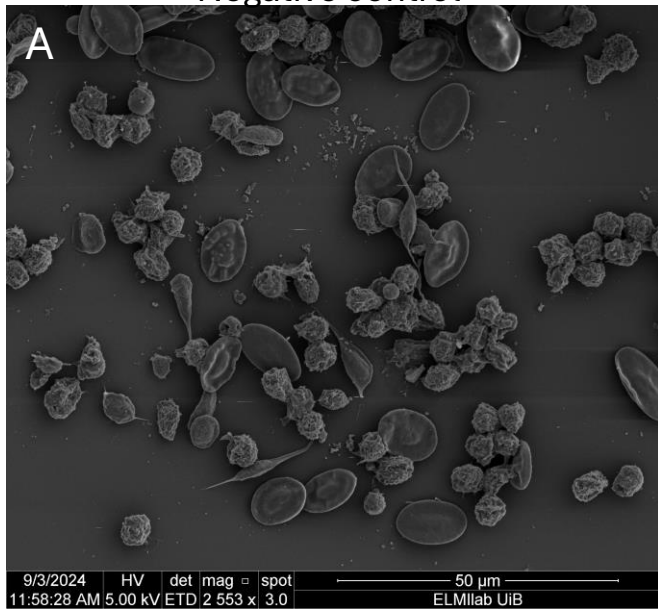
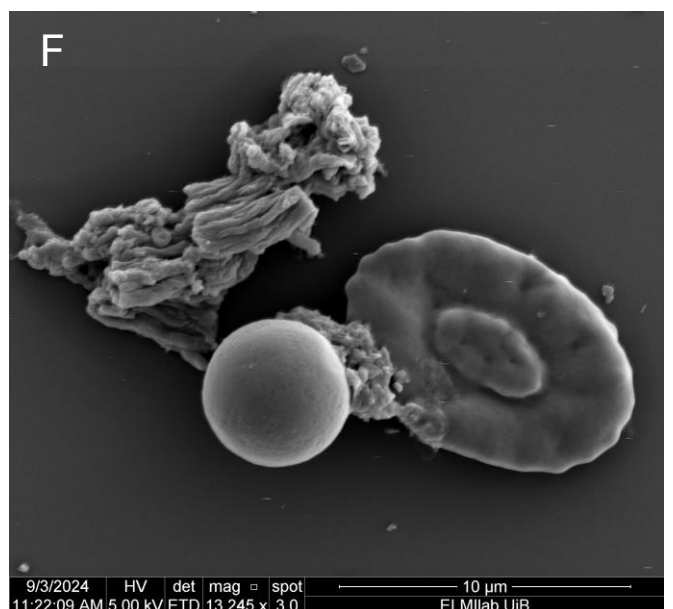
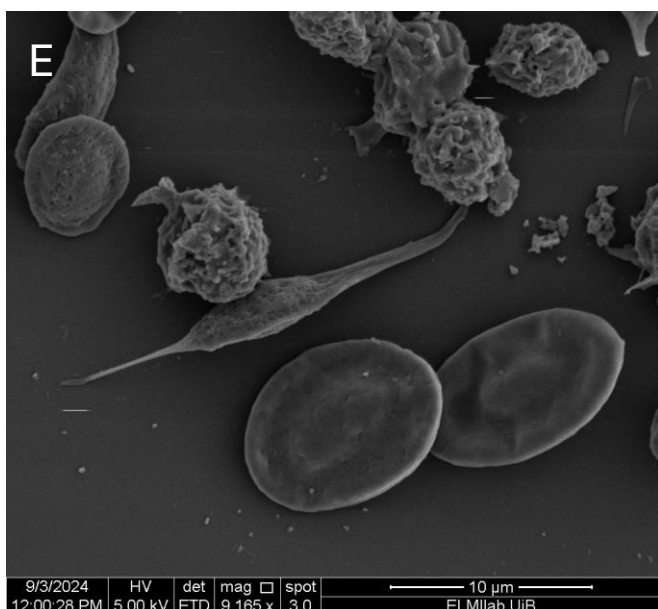
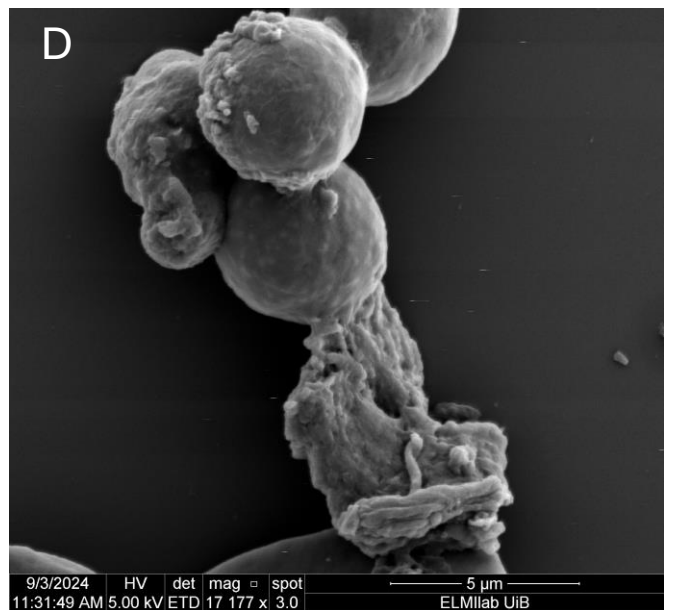
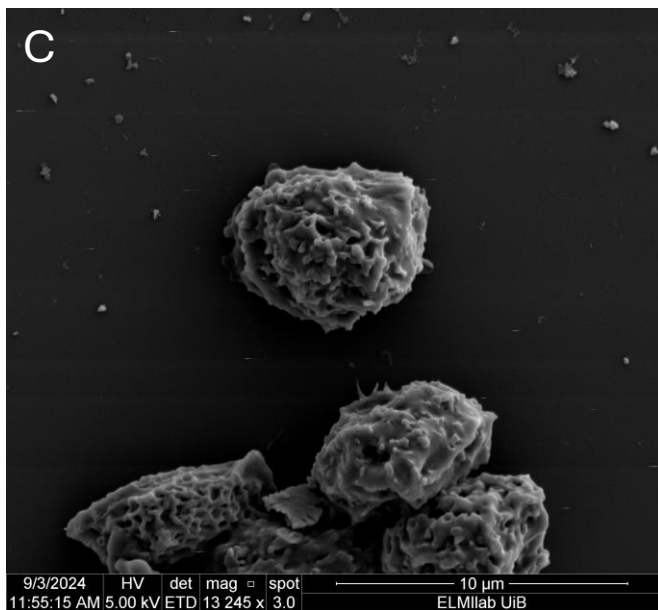
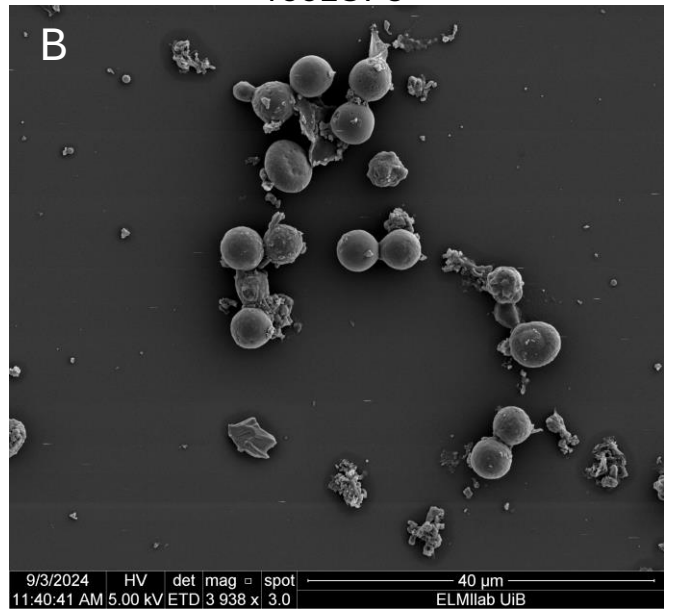


Negative control



recLGP3



Supplementary figure 6: Scanning electron microscopy of coho salmon leukocytes, showing (A, C, E) negative control leukocytes and (B, D, F) leukocytes exposed to 112 μg recLGP3 for one hour. In leukocytes exposed to recLGP3 small holes in the membrane and cell swelling, and some membrane protrusions are seen. The recLGP3 exposed cells seem to make the membrane permeable and fragile, and it cannot be excluded that the swelling may be an artefact from sample transportation and sample preparation. Red blood cells in all samples seem to not be affected by recLGP3 exposure. $n=3$.